

Date of issue: 07Jun18

Tour code:

Guaranteed departures

Small group safari maximum:

Travel through:

Safari length:

BPac09
from 4 travellers
8 travellers
Botswana

9 days



2019

BOTSWANA BAOBABS & OKAVANGO DELTA



DEPARTS:

MAUN on Sunday at 14:00pm

ENDS:

VICTORIA FALLS on Monday @ ±08:00am

Highlights

- * Moremi Game Reserve – game drives
- * Savuti – game drives
- * Chobe National Park – game drive and river cruise



SAFARI GRADE: CLASSIC

There are few wildlife experiences in the

world like a week spent in the Botswanan wilderness. This classic itinerary offers a lodge and luxury camping combination safari. The lodges are beautiful, comfortable & make for a great adventure safari though the world famous parks.

Overnight The accommodation throughout this classic journey is of 3 to 4 star style and are chosen not only for their service and comfort level but also for their wonderful locations and local wildlife viewing opportunities. All rooms have private en suite facilities. For the 2 nights in central Chobe NP we stay in mini meru tents. Each tent has twin camp beds with linen and en suite chemical toilet and bucket shower with hot water off the fire.

Meals 8 breakfasts, 4 lunches and 5 dinners are included. All of which are provided by the lodges, or mobile camp at which we are staying. Due to travel arrangements or game viewing activities, the included lunches will be picnic lunches. Where meals are not included there will be an opportunity to buy a meal en route or at the restaurant in the evening.

Transport for the entire safari you travel in a purpose built 4WD Land Cruiser with 12 forward facing seats and trailer for luggage. It has solid roof and back which provides protection from the sun, and dust. The Land Cruiser has 12 individual seats in 4 rows of 3 seats but this tour is limited to a **maximum of 8 clients** so that everyone has a "window" seat. The light aircraft flight from Maun airport to Khwai airstrip is usually 4-12 seater Cessna or Caravan. Due to bush landing the luggage limits are strictly adhered to.

Non participation This is an adventure tour, and as such please expect to get involved. Where there are porters, they'll help you, otherwise you'll need to carry your own bag. Included meals are all lodge or camp provided. If you have a particular interest, please let your safari leader know, and he/she will endeavour to make your journey more rewarding.

CLASSIC JOURNEY ITINERARY

Day 1, 2 & 3 **MOREMI** [lodge Bx2 Lx2 Dx3]

This safari starts at Maun airport where you will be met and after a short briefing, you will board a light aircraft flight to Khwai. You will then be met by your safari guide and enjoy your first game drive to the lodge.

Moremi Game Reserve is the jewel of Botswana and arguably one of the best wildlife viewing destinations in Africa. To the north of Moremi is a vast wilderness consisting of open grasslands and forest and abundant wildlife. Our lodge is situated on a large concession in this wilderness, overlooking a waterhole, the thatched deck allows us to watch the animals in the afternoon as they come down to quench their thirst. Moremi's wide variety of habitats makes it a birdwatchers paradise. Our days are spent on open 4WD game drives in Moremi GR and on the wildlife concession along the Khwai River.

Day 1: N/A

Day 1: N/A

Day 1: Dinner will be a set menu provided by the lodge

Day 2-3: Breakfast will be provided by the lodge

Day 2-3: Lunch provided by the lodge

Day 2-3: Dinner will be a set menu provided by the lodge

Includes:

Light aircraft flight, game drives & National Park Entry Fees

Overnight:

Elephant Pools Lodge- exclusive private tented bush lodge, bordering Moremi Game Reserve. Twin share permanent tented lodge with en-suite facilities. WiFi not available



Distance/time:

Short 20minute flight in small aircraft, morning & afternoon game drives +/-4hrs each

Optional Activities:

Helicopter flight over the Delta (own expense)



Day 4 – 5 **SAVUTI** [mini meru serviced camp BLD]

We head north from Moremi to the renowned Savuti section of the Chobe National Park. This is an excellent area for big predators with frequent sightings of lion and leopard, elephant and plains game. We spend our time on game drives through the dramatic open plains dotted with Acacia, and along the Savuti channel where we hope to see the lions and hyenas that make Savuti an outstanding wildlife destination. We overnight in our serviced tented camp. After dinner in our dining tent, fall asleep to the sounds of the African bush.

Day 4: Breakfast provided by the lodge

Day 4: Lunch provided by the mobile camp

Day 4: Dinner provided by tour mobile camp

Day 5: Breakfast provided by the mobile camp

Day 5: Lunch provided by the mobile camp

Day 5: Dinner provided by tour mobile camp

Includes:

Entrance fees, morning and afternoon game drives in open 4WD game viewing vehicle

Overnight:

Mini Meru Serviced Camping – twin camp beds with linen and en suite chemical toilet and bucket shower with hot water off the fire. Towel will be provided.

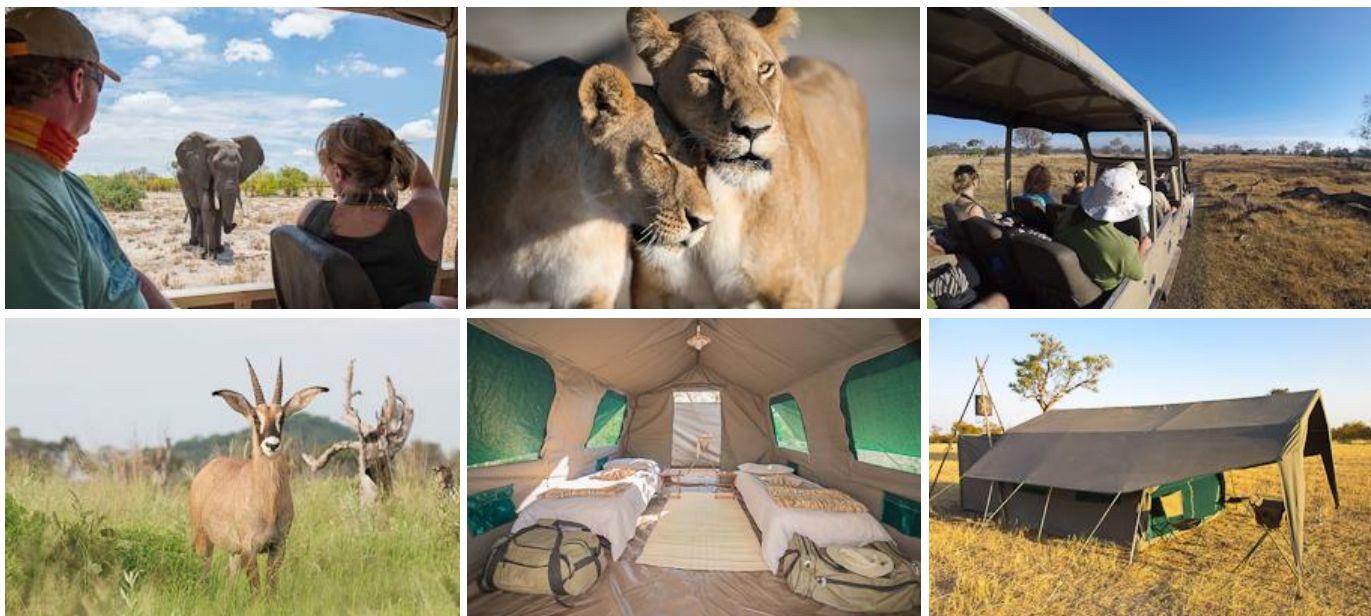


WiFi not available

Distance/time:

150kms, ± 4½ hours, excludes game drives & stops for wildlife viewing

SUNWAY SAFARIS www.sunway-safaris.com +27(11) 465 4905 marketing@sunway-safaris.com sunway.reservations



Day 6 – 7 **CHOBE NATIONAL PARK** [lodge B - -]

Our next destination is Chobe National Park. We depart Savuti and head north through the remote wilderness of Botswana to the small town of Kasane and our lodge on the banks of the Chobe River. The following day we head back into Chobe NP on a game drive in the early morning before heading back to the comfort of the lodge during the heat of the day. In the afternoon we take a boat cruise on the Chobe River. This is possibly the most satisfying and relaxing game viewing activity in Southern Africa. We head into the park on a small game viewing boat and spend the next few hours till sunset floating slowly down stream while watching the wildlife come down to drink. We get close to the herds of elephants, and have amazing sightings of crocodile, hippo, fish eagle and many more. As the sunsets we head out of the park with some amazing wildlife and sunset photographs.

Day 6: Breakfast provided by mobile camp


Day 6: Lunch will be an own expense meal

Day 6: Dinner will be an own expense meal at a local restaurant

Day 7: Breakfast provided by the lodge

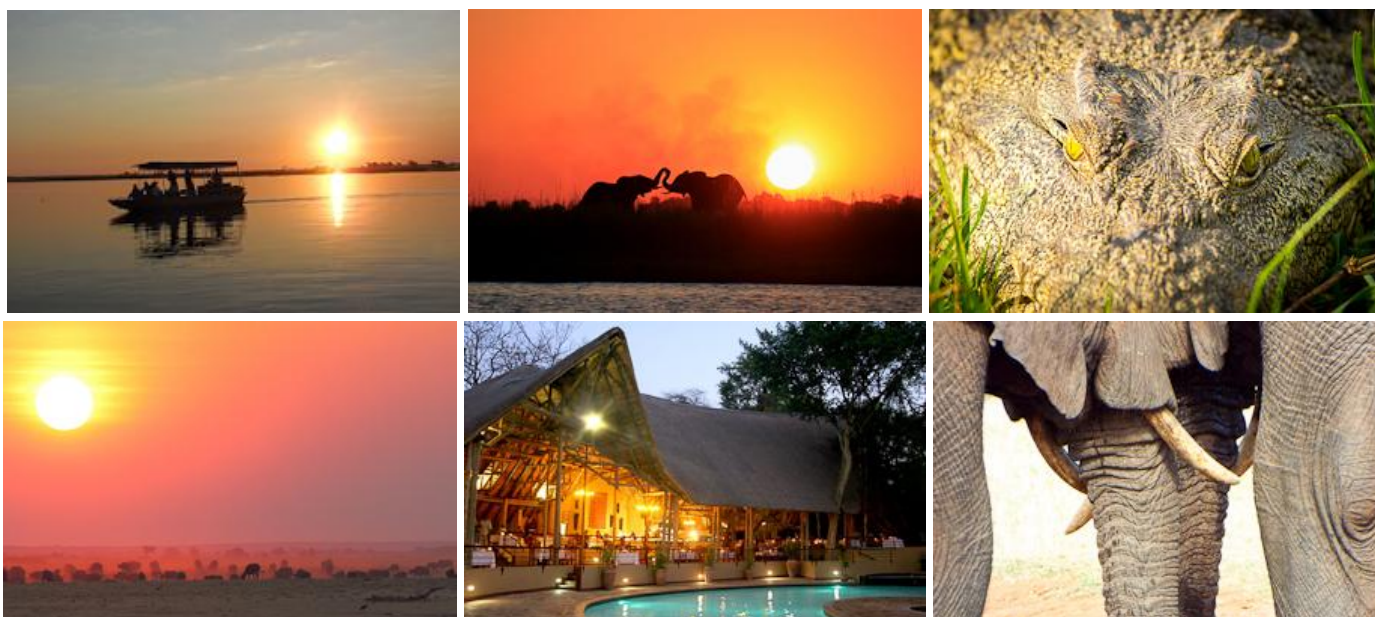
Day 7: Lunch will be an own expense meal

Day 7: Dinner will be an own expense meal at a local restaurant

Includes: Entrance Fees, game drive & Chobe River Boat Cruise 

Overnight: [Chobe Safari Lodge](#) – twin rooms with en-suite facilities, swimming pool, restaurant & bar.
WiFi available

Distance/time: 220kms ± 4½ hours, excludes game drives & stops for wildlife viewing (Savuti – Chobe)



Day 8 **VICTORIA FALLS, ZIMBABWE** [lodge B - -]

We leave Botswana behind and cross into Zimbabwe and make our way to Victoria Falls. The mighty Zambezi River thunders 100m over the gorge creating a magnificent spectacle. The spray from the waterfall sustains a rainforest surrounding the falls which is abundant with birdlife and protected in a National Park. We explore the Victoria Falls on foot with a local guide bringing the Falls to life with tales of the explorers of these ancient lands.

Day 8: Breakfast will be provided by the lodge

Day 8: Lunch is an own expense meal

Day 8: Dinner is an own expense meal at a local restaurant

Includes: Entrance fees to Victoria Falls
Overnight: [Bayete Guest Lodge](#), twin rooms with en-suite facilities. Swimming pool, restaurant, bar and telephone.
Free WiFi available
Distance/time: 100kms – 1.5 hours, excluding border formalities
Optional Activities Sunset cruises, scenic flights & many more



Day 9 **VICTORIA FALLS – TOUR ENDS** [- B - -]

There is time for one of the variety of optional adventure activities (own expense) before the tour ends.

Day 9: Breakfast provided by the lodge

Day 9: Lunch will be an own expense meal

Day 9: Dinner own expense

Includes: N/A
Overnight: N/A
Distance/time: N/A



Please Note: The distance and travel times quoted above are an estimate only, and subject to local road conditions and animal sightings!

Special Interest: Botswana is considered Southern Africa’s premier game viewing destination. The remote wilderness, limited access for visitors and abundant game make for an exceptional wildlife safari.

Sustainable Tourism: A Botswana guide travels with us through the National Parks. This ensures employment for local people and direct benefits for the community from tourism. The local guides are highly knowledgeable so please ask plenty of questions, you’ll be amazed at what you can learn.

OKAVANGO DELTA EXTENSION



The Okavango Delta is an extraordinary wilderness environment that needs no introduction. A vast wetland paradise in the center of the Kalahari Desert, fed by rivers from Angolan highlands and seasonal rains. It is an ever changing kaleidoscope of waterways, reed beds, islands and dry land that grows and shrinks each season like a living creature itself, supporting a breathtaking range of wildlife. Hippos, elephants, lions and buffalo, the shy Sitatunga antelope and the abundant birdlife – a truly amazing wildlife experience.

Should you have the time and want to extend your safari to include the Okavango Delta, then we recommend at least 2 or 3 nights in the Delta, before joining the Botswana Baobabs safari.

The Okavango is a huge area, growing to a maximum of 15,000 km². Within that range there is the Moremi Game Reserve in the South East, and several private concessions. The concessions are portions of land leased by the government to private lodges, with limited numbers of beds per concession. So there are a variety of camps and lodges within the Okavango, offering a range of standards and prices.

There are several Okavango Delta extension options available through Sunway. You can either fly (light aircraft) or transfer by 4WD or motorboat into the Okavango to either a "water" camp which will offer water based activities such as mekoro and motorboat activities, or a "land and water" camp which will offer water based activities and game drives and walking activities.

Gunns Camp		Mid Season 01Jan18-30Jun19 & 01-30Nov19	High Season 01Jul19-31Oct19
2 night, 3 days	Per person sharing Single Supplement	€ 1,220 N/A	€ 1,590 € 320
3 night, 4 days	Per person sharing Single Supplement	€ 1,716 N/A	€ 2,272 € 480



Nxamaseri Island Lodge		Mid Season 01Mar18-30Jun19 & 01Nov-31Dec19	High Season 01Jul19-31Oct19
2 night, 3 days	Per person sharing Single Supplement	€ 1,019 € 202	€ 1,119 € 202
3 night, 4 days	Per person sharing Single Supplement	€ 1,434 € 303	€ 1,586 € 303



Okavango extension packages include: Flights to and from the lodge. Accommodation, scheduled activities and laundry. All meals, snacks, tea & coffee and local beverages (alcoholic & non-alcoholic). National Parks fees, government levies and taxes. Flight departure tax Maun.

2019 PRICES AND DEPARTURE DATES:

RACK Price: (valid Jan 2019 – Dec 2019)

BPac09 € 3 290 pps

Single tent supplement: € 890 pp Due to the group size and the lodge room allocations, if you are travelling on your own there is a price supplement

2019 DEPARTURE DATES

Departs MAUN Sunday at 14:00pm	Ends VICTORIA FALLS Monday at 08:00am	
27-Jan-19	04-Feb-19	
24-Mar-19	01-Apr-19	German
21-Apr-19	29-Apr-19	
05-May-19	13-May-19	German
02-Jun-19	10-Jun-19	
07-Jul-19	15-Jul-19	German
28-Jul-19	05-Aug-19	
11-Aug-19	19-Aug-19	German
01-Sep-19	09-Sep-19	
15-Sep-19	23-Sep-19	
06-Oct-19	14-Oct-19	
20-Oct-19	28-Oct-19	German
03-Nov-19	11-Nov-19	
24-Nov-19	02-Dec-19	



* **Bold dates** are guaranteed departures; all other dates are guaranteed from 4 clients.

* **German:** These tours have a German speaking translator/tour leader

DETAILED TOUR INFORMATION:


In a nutshell

- A true African experience - wild and free!
- All inclusive trip with cultural experience, adventure and wildlife.
- Victoria Falls, Moremi Game Reserve, Savuti & Chobe National Park

Why travel with Sunway Safaris

We understand that there are several options available to you when choosing your African safari. We also know that you want to make the most informed decision about your safari, what you get, what's included and what you see and experience. So these are just a few of the Sunway qualities and facts:

- **Small groups** – by travelling with a maximum of 8 people, you are able to witness Africa and have first-hand contact with this amazing continent and its people without being a negative influence. This has been a key factor in our continued success. Our trips appeal to a wide demographic of traveler. Our clients range in age from 25 to 65+ with the average being 45. The range of travelers gives a variety of perspectives which adds to the experience of each safari.
- **2 Sunway tour guides** – group leaders are the key to any safari. On a Sunway safari you will travel with 2 qualified and registered field guides (Field Guides Association of SA). Two guides as crew, not a guide and a driver, means interesting trips with maximum knowledge and information. Our guides have a passion for Africa, her people and her wildlife, and they love nothing more than sharing their knowledge with you.
- **Guaranteed departures** – departure dates on each itinerary shown as bold are guaranteed departure dates. All other departures operate with a minimum of 4 clients.

- **All inclusive price** – when we travel ourselves, we always feel that if we're in a country we should find and see the best it has to offer. So when planning the Sunway routes we ensure that each trip provides the best inclusions and experiences. For example, if you go to Botswana – you have to visit the national parks in an open 4WD – it is the essence of the Botswana wilderness. If you tour Zambia, then you must visit South Luangwa NP and do a game walk with a local scout. When booking on a Sunway Safari there are no hidden costs. All of the entrance fees are included, and a wide range of activities, and most meals. We have included many highlights in our tours, so that you will see and experience the highlights without having to pay extra when you get there. So when you decide on which safari company to book with, look carefully at what you're actually getting. You may only visit a place once, make sure you get the most out of it.
- **Safety** – our fleet of vehicles are custom built to ensure comfortable and safe touring. Each is constructed, by an authorised passenger vehicle builder, to the latest safety requirements, with a safety shell, and every seat has a lap belt. This gives you peace of mind when travelling with Sunway Safaris on the often demanding African roads.
- **Responsible travel** - Our commitment to sustainable & responsible tourism is reflected in our low impact travel style where all we take is photographs and all we leave is our footprints. Being an African company we have the grassroots contacts to make a real difference in the lives of the people whose lands we visit. 

On each itinerary in the brochure you'll find this symbol which highlights just one of the sustainable travel initiatives that we support
- **Solo Travellers on Classic Journeys** – Due to the group size and the lodge room allocations, if you are travelling on your own there is a price supplement.
- **Experience** - we have more than 20 years' experience planning tours throughout Southern Africa. As such, our itineraries and routes have been perfected over many years ensuring that your tour will run smoothly. We visit the highlights of Southern Africa, but ensure that you do not follow the well-trodden tourist track. All of us at Sunway Safaris have extensive travel experience in Africa, and throughout the world. Being adventure travellers ourselves, we know how to plan trips that give you a broad experience of the countries that you will visit.
- **Based in Africa** - probably the most important part of a Sunway safari is that we are an African company with offices in South Africa and Botswana. We live in Africa, we travel in Africa and it is our passion for this amazing continent that makes Sunway your best travel option.
- **Age Policy** - On all scheduled tours, we accept children 12-17 with accompanying adult. We have no upper age limit. Clients older than 65 years of age at time of travel require a medical certificate stating client is fit and healthy to join an adventure travel group tour. We have many clients over 65 years of age, who are perfectly capable of enjoying every aspect of a Sunway tour, both accommodated and camping. For more details contact marketing@sunway-safaris.com.

Local Payment

- There is no local payment on this tour

Recommended reading

Before you travel you might want to read any of the following books. While not specific to the Sunway tour you will join, they do provide some background understanding of the countries you will be visiting.

- #1 Ladies Detective Agency by Alexander McCall Smith (Fictional story of life in Botswana)
- Trees of the Okavango by Veronica Roodt (A reference book with traditional uses and myths)
- Okavango: Jewel of the Kalahari by Karen Ross (A comprehensive description of the Delta ecology)
- Don't run whatever You Do by Peter Allison (A guide's perspective of Botswana lodge life)
- Okavango: Africa's Last Eden by Frans Lanting (A coffee table book of photography)
- Newman's Birds of Southern Africa by Kenneth Newman
- Sasol Birds of Southern Africa by Ian Sinclair, Phil Hockey, and W.R. Tarboton
- The Safari Companion: A Guide to Watching African Mammals Including Hoofed Mammals, Carnivores, and Primates by Richard D. Estes and Daniel Otte
- Field Guide to Trees of Southern Africa (Field Guides) by Braam Van Wyk, Keith Coates Palgrav, and Piet Van Wyk

Shopping

- Craft shopping for carvings, batiks, paintings and clothing is best in Victoria Falls which has a wide variety of curios. Botswana has beautiful grass weavings but these are available mostly at curio shops as there are hardly any craft markets in Botswana.

Food

- The majority of meals on this safari are provided by the lodges.

Difficulty

- Anyone who is generally active and in good health should enjoy this trip.
- Full itinerary with a couple of long driving days. The road conditions through the wilderness areas are very poor and our progress can at times be slow and dusty. Remember to hold on at all times and enjoy the ride!

Things you should know

- Includes park entrances, game drives and the Okavango Delta excursion.
- As this tour spends a large amount of time in wildlife areas it is essential that clients adhere to the tour leaders (and local guides) instructions regarding interaction with wildlife, camp safety and game walk/drive rules.
- Your client will need a valid passport and visas for entry into Zimbabwe and Botswana.
- Luggage, please pack to a limit of 12kgs in a soft sports bag. Also bring daypack for walks and keeping in the vehicle. You do not need to bring a towel as the accommodation establishments will provide towels.
- We recommend that you bring Euro or US\$ for personal expenses on this trip but please note that foreign currency will need to be changed into Botswana Pula as shops, restaurants and market vendors only accept BWP. Expenses in Victoria Falls can be paid in US\$ and major credit cards can also be used for optional activities. Traveler's cheques can be changed in Victoria Falls, Kasane and Maun (although in Zimbabwe travellers cheques attract a very high commission). See the Sunway tour dossier for approximate costs of drinks and meals etc.

Common questions about this trip

1. **Can I buy camera memory cards?** Memory cards and other photographic accessories will be available several times on tour. A camera with a zoom lens from wide angle to telephoto, 35-300mm, is advisable to capture both scenic and wildlife shots. Each vehicle is fitted with a 12/220V inverter – this can be used while the vehicle is running (but will drain the vehicle battery if left plugged in), so this should only be relied on for limited charging of camera batteries and we recommend you bring a 2nd battery. Remember you can also charge your camera at all the accommodation. In Moremi at Hyena Pan, there is a communal charger in the main lounge area that can be used when the generator is running. The camp otherwise is solar powered.
2. **Is it safe?** Botswana is relatively safe and your guide knows the country intimately and will endeavor to show you the best parts while looking after you. In the wild areas your guide will brief you on the necessary precautions, follow this advice and you will be fine. Be aware of your personal belongings and you will have a great trip!
3. **Do I need malaria tablets?** Yes, the trip passes through malaria areas and prophylactics are recommended.
4. **What do I need to bring?** All details are covered in our general tour briefing (available from www.sunway-safaris.com on home page) but the basics are: - comfortable clothes for warm days and cool evenings, walking shoes, flash light, a raincoat, hat and sunglasses, swimsuit, a small pair of binoculars also comes in very handy and most importantly - a sense of adventure!

