

Date of issue: 03May18

Tour code:

Guaranteed departures

Small group safari maximum:

Travel through:

Safari length:

WVac15

from 4 travellers

12 travellers

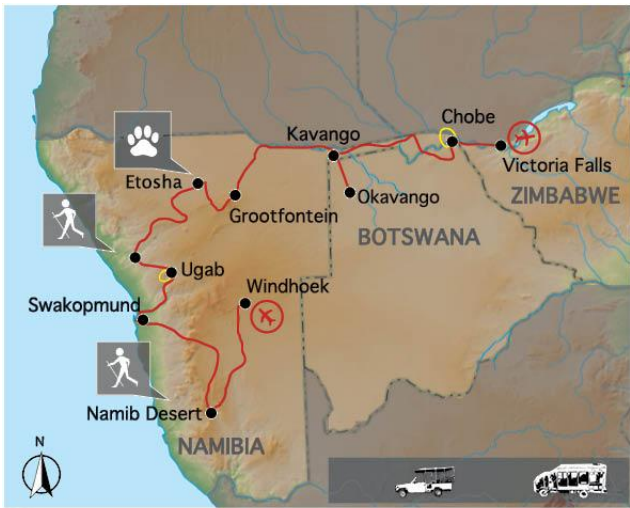
Namibia, Botswana & Zimbabwe

15 days



2019

WINDHOEK TO VIC FALLS "ELEPHANT TRACK"



DEPARTS:

WINDHOEK on Saturday at 08:00am

ENDS:

VICTORIA FALLS on Saturday at +/-08:00am

Highlights

- * Namib Desert – walk Sossusvlei dunes
- * Swakopmund – dune boarding & quad biking
- * Damaraland– rock paintings
- * Etosha NP – game viewing
- * Caprivi – Game drives & boat cruise
- * Chobe National Park
- * Victoria Falls – A natural wonder of the world & adventure activities



SAFARI GRADE: CLASSIC

This classic safari offers a magnificent

journey through the most beautiful variety of locations in Namibia and includes the Chobe NP in Botswana and Victoria Falls in Zimbabwe.

There are some long travel days on this journey but we have 2 night stays at all the highlights. The lodges are beautiful, comfortable & make for a great adventure safari.

Overnight The accommodation throughout this classic journey is of 3 to 4 star style and are chosen not only for their service and comfort level but also for their wonderful locations and local wildlife viewing opportunities. All rooms have private en suite facilities. For Etosha we stay inside the national park and for the Namib we stay on a private lodge bordering the national park.

Meals 14 breakfasts, 5 lunches and 8 dinners are included. All of which are provided by the lodges at which we are staying. Due to travel arrangements or game viewing activities, the included lunches will be picnic lunches. Where meals are not included there will be an opportunity to buy a meal en route or at a restaurant in the evening.

Transport for the majority of this safari you travel in a Sunway Safari truck with 12 seats; or (on 5% of tours) Mercedes Sprinter minibuses with 12 forward facing seats and air conditioning. The game drives in Etosha will be in the tour vehicle, with large sliding windows. For the game drives in Ugab and Chobe we use open sided 4WD vehicles with local guides.

Non participation This is an adventure tour, and as such please expect to get involved. Where there are porters, they'll help you, otherwise you'll need to carry your own bag. Included meals are all lodge provided. If you have a particular interest, please let your safari leader know, and he/she will endeavour to make your journey more rewarding. Your holiday time is exclusively yours to enjoy your safari and get the most from your travel experience.

Day 1 - 2 WINDHOEK - NAMIB DESERT

[Lodge Bx1 - Dx2]

Meet your safari leader at 08:00am for a departure briefing. We then drive through the rolling hills south of Windhoek and drop down the escarpment onto the desert plains to stop at Solitaire for the world's best apple tart (own expense). This afternoon we travel to our lodge and enjoy the vast open spaces of the Namib Desert.

The following day we visit the Namib Naukluft National Park to witness the amazing landscapes of Sossusvlei and Deadvlei. The vleis are clay pans formed by the occasional flooding of the Tsauchab River. Sossusvlei is dotted with ancient Camel Thorn trees (*Acacia Erioloba*) while the trees on Deadvlei are lifeless and stark against the surrounding tall orange sand dunes.

Day 1: Breakfast not included

Day 1: Lunch will be an own expense meal

Day 1: Dinner will be a set meal provided by the lodge

Day 2: Breakfast provide by the lodge

Day 2: Lunch will be an own expense meal

Day 2: Dinner will be a set meal provided by the lodge

Includes:

Entrance fees to Sesriem Canyon and Naukluft National Park

Overnight:

[Little Sossus Lodge](#) – twin share permanent tents with en suite facilities. Restaurant, swimming pool & bar.



WiFi not available

Distance/time:

304kms, ± 4½ hours excluding stops for sightseeing & lunch



Day 3 SWAKOPMUND [hotel B - -]

Swakopmund lies on the Atlantic coast, and the relative cool sea breezes will be a welcome change from the hot desert days. The town lies at the mouth of the Swakop River which flows infrequently, but forms the northern boundary of the relentlessly northward migrating sand dunes. Optional scenic flights from Swakopmund offer spectacular desert landscapes as they fly along the Skeleton Coast (own expense).

Day 3: Breakfast provided by the lodge

Day 3: Lunch will be an own expense meal

Day 3: Dinner will be an own expense meal at a local restaurant

Includes:

N/A

Overnight:

[Hotel Zum Kaiser](#) - twin share rooms with en suite facilities. Telephone & restaurant.



WiFi in main building

Distance/time:

346kms, ± 5 hours excluding stops for sightseeing

Optional Activities:

Sand boarding, skydiving, ocean canoe safari, scenic flights & many more



Day 4 – 5 BRANDBERG MASSIF [lodge BLD]

We head inland to the Tsiseb Conservancy and the Brandberg, a mountainous granite outcrop. Standing at over 2,600m it towers above the surrounding plains and is visible from a great distance. The Tsisab Ravine at the foot of

SUNWAY SAFARIS www.sunway-safaris.com +27(11) 465 4905 marketing@sunway-safaris.com sunway.reservations

the mountain contains more than 1000 rock shelters and some 45,000 rock paintings including the famous "White Lady", which is a short 40 minute walk up the ancient watercourse.

Our lodge, situated in the dry Ugab River valley, is ideally situated to explore the area in search of the rare desert elephants and we'll join a local guide on a 4WD excursion. Being far ranging and elusive, a sighting of the elephants cannot be guaranteed, but with the knowledge of our local guide the day will be fascinating.

Day 4: Breakfast provided by the hotel

Day 4: Lunch provided by the tour leaders


Day 4: Dinner will be a set meal provided by the lodge

Day 5: Breakfast provided by the lodge

Day 5: Picnic lunch provided by the tour leaders

Day 5: Dinner will be a set meal provided by the lodge

Includes: Entrance to Brandberg, walk with local guide to White Lady painting and 4WD excursion with local guide

Overnight: [Brandberg White Lady Lodge](#) – twin share chalets with en-suite facilities, bar,  restaurant & swimming pool.

WiFi not available

Distance/time: 227km, ± 2½ hours, excluding stops for sightseeing



Day 6 - 7 ETOSHA NATIONAL PARK [chalet B - -]

The salt pan in Etosha is the remnants of a large lake that dried up thousands of years ago. This "Great White Place" is 120km wide and forms the central attraction in the National Park. Natural springs and waterholes around the edges provide life giving water that sustains the wildlife in this otherwise arid area.

Elephants coated in the white salt dust from the pan make for extraordinary photos. Our camp is located on the edge of a floodlit waterhole allowing us to get a glimpse of the nocturnal animals that come to drink, including the rare black rhino, lion and possibly leopard. We enjoy the evening sitting at the waterhole in anticipation.

Day 6: Breakfast provided by the lodge

Day 6: Lunch own expense meal

Day 6: Dinner will be an own expense meal at local restaurant


Day 7: Breakfast provided by the lodge

Day 7: Lunch own expense meal

Day 7: Dinner will be an own expense meal at local restaurant

Includes: Entrance fees to Etosha National Park, 1 x full day game drive in Etosha NP

Overnight: Day 6: [Okaukuejo](#), twin rooms en-suite with swimming pool, restaurant and bar

Day 7: [Namutoni](#), twin rooms en-suite with swimming pool, restaurant and bar 

Distance/time: 560kms, ± 5 hours excluding stops for sightseeing & lunch + 1 afternoon drive & 1 x full day game drive in Etosha NP





Day 8 GROOTFONTEIN [chalet B - -]

We spend most of today in the Etosha National Park, before moving to our overnight lodge in the Grootfontein district. En route we'll stop at the Hoba meteorite. At over 60 tons, it is the largest known meteorite on Earth.

Day 8: Breakfast provided by the lodge

Day 8: Lunch own expense meal

Day 8: Dinner will be an own expense meal at lodge restaurant

Includes: Morning game drive in Etosha NP

Overnight: [Roys Rest Camp](#) – twin permanent chalets with en-suite facilities, Swimming pool, bar & restaurant. WiFi not available



Distance/time: 428kms, ± 5.3 hours, excluding stops for sightseeing & lunch

Day 9 KAVANGO RIVER [chalet / permanent lodge tent BLD]

Driving north east we enter the Kavango Region, our lodge is situated on the banks of the Kavango River, which flows from Angola, across the Caprivi and feeds the Okavango Delta. Excellent bird watching opportunities.

Day 9: Breakfast provided by the lodge

Day 9: Lunch provided by the tour leaders

Day 9: Dinner provided by the lodge

Includes: -

Overnight: [Nunda River Lodge](#) – twin share permanent tents with en-suite facilities. Swimming pool, bar, restaurant, telephone. WiFi not available



Distance/time: 432kms, ± 5.5 hours, excluding stops for sightseeing & lunch



Day 10 – 11 OKAVANGO DELTA [lodge BLD]

We explore the Mahangu Game Reserve on a morning game drive in our tour vehicle before we cross into Botswana at the Mohembo border and head south to our lodge at Nxamaseri on the Okavango Pan handle. From our lodge, we'll explore the Okavango by mokoro and motor boat. Tranquil reed lined rivers, crystal clear water and abundant bird life. Time to rest, relax and enjoy the views of the Okavango Delta.

Day 10-11: Breakfast provided by the lodge

Day 10-11: Lunch provided by the lodge

Day 10-11: Dinner provided by the lodge

Includes: Mahangu NP entrance fee & game drive in tour vehicle, Okavango mokoro and motorboat excursions

Overnight: [Guma Lagoon](#) – twin en-suite canvas chalets. Swimming pool, bar, restaurant. WiFi available in lounge



Distance/time: 160km ± 2 hours, excluding stops for sightseeing and border crossing



Day 12 **CAPRIVI** [chalet B-D]


We cross back into Namibia and cross part of the Caprivi Strip. A narrow piece of land annexed to the German South West African colony in 1890, allowing access to the mighty Zambezi River and a trade route to the East coast of Africa and the then German Tanganyika. We enjoy an afternoon boat cruise exploring the game rich area.

Day 12: Breakfast provide by the lodge

Day 12: Lunch will be an own expense meal

Day 12: Dinner will be a set menu provided by the lodge

Includes: River cruise on Kwando River

Overnight: [Camp Kwando](#) – twin share permanent tents with en-suite facilities. Swimming pool, bar, restaurant, telephone. 

WiFi not available

Distance/time: 380km ± 5.5 hours, excluding border formalities and Mahangu game drive




Day 13 **CHOBE** [lodge B - -]

Heading east we cross the Caprivi enter Botswana at the Ngoma Border and drive across the Chobe National Park to the small town of Kasane. The Chobe River attracts an abundance of wildlife. Our afternoon activity is an incredible experience on the Chobe River where we head out by boat into the park and get close to the elephants as they quench their thirst. We leave the park as the golden sun slips below the horizon.

Day 13: Breakfast provided by the lodge

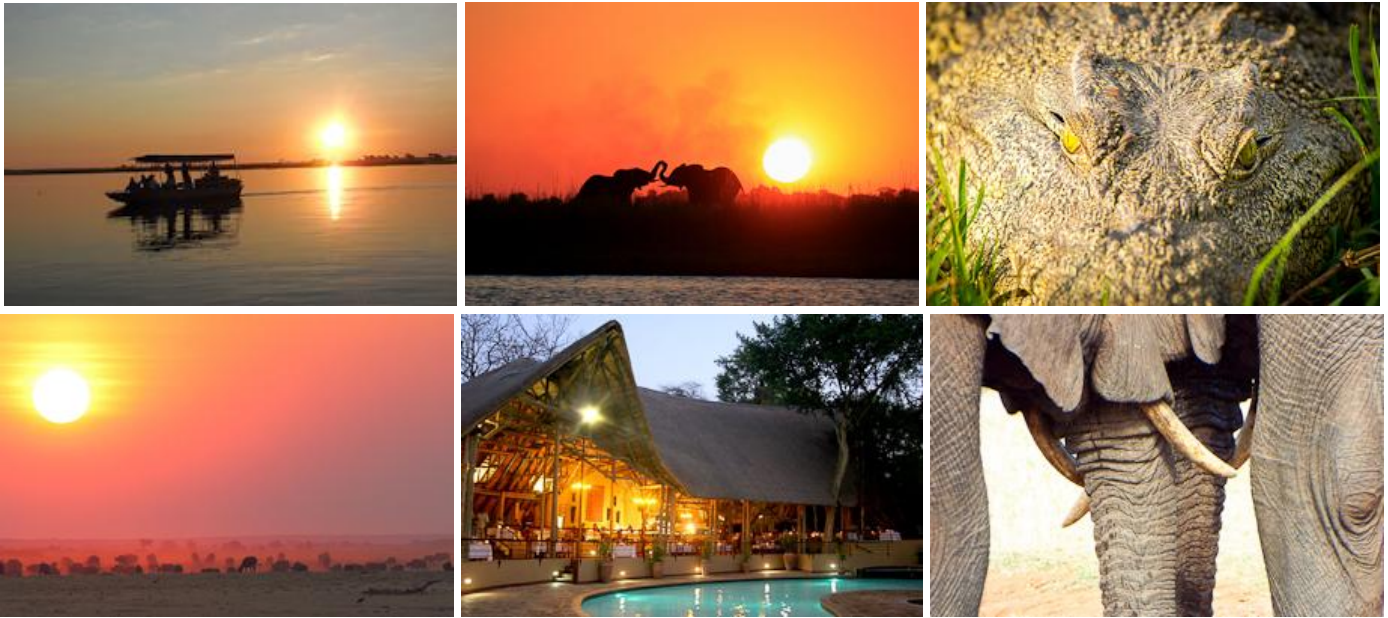
Day 13: Lunch own expense meal

Day 13: Dinner will be an own expense meal at a local restaurant

Includes: Afternoon boat cruise in Chobe NP, park fees 

Overnight: [Chobe Safari Lodge](#) – twin rooms with en-suite facilities, swimming pool, restaurant & bar. WiFi available

Distance/time: 270km, ± 4.5 hours, excluding border formalities, stops for sightseeing & lunch




Day 14 VICTORIA FALLS, ZIMBABWE [lodge B - -]

The Zambezi River rises in Zambia before flowing through Angola and along the border of Namibia, Botswana, Zambia and Zimbabwe, before plunging 100 metres over the awe-inspiring Victoria Falls. The spray billowing up from the gorge creates a lush rainforest that surrounds the falls. With our local guides, we explore the National Park where we walk to the very edge of the falls and marvel at the power of the water that created this wonder.

Day 14: Breakfast provided by the lodge

Day 14: Lunch own expense meal

Day 14: Dinner will be an own expense meal at local restaurant

- Includes:** Entrance to see the Victoria Falls Zimbabwe
- Overnight:** [Bayete Guest Lodge](#), twin rooms with en-suite facilities. Swimming pool, restaurant, bar and telephone.  Free WiFi available
- Distance/time:** 100kms – 1.5 hours, excluding border formalities
- Optional Activities** Sunset cruises, scenic flights & many more



Day 15 VICTORIA FALLS, ZIMBABWE – TOUR ENDS [- B - -]

This classic journey ends at 08:00am at the lodge.

Day 15: Breakfast provided by the lodge

Day 15: Lunch not included

Day 15: Dinner not included

- Includes:** N/A
- Overnight:** N/A
- Distance/time:** N/A

Please Note: The distance and travel times quoted above are an estimate only, and subject to local road conditions and animal sightings!

Please note: That the accommodation specified above and in the itinerary, is a guide only and is subject to availability. Alternatives will be of a similar standard, and accommodation changes will be made without notice.

Sustainable Tourism: In the Ugab wilderness region we stay at the White Lady Lodge. A partnership was signed in 2003 and the local community benefit through the employment and a percentage of the income of the lodge. There are also other spin-offs such as the sale of fire wood to the lodge.

2019 PRICES AND DEPARTURE DATES:

RACK Price: (valid Jan 2019 – Dec 2019)

WVac15 € 3 530 pps

Single supplement: € 1 315 pp Due to the group size and the lodge room allocations, if you are travelling on your own there is a price supplement

2019 DEPARTURE DATES

Departs	Ends	
WINDHOEK	VICTORIA FALLS	
Saturday at 08:00am	Saturday at 08:00am	
16-Feb-19	02-Mar-19	German
13-Apr-19	27-Apr-19	
04-May-19	18-May-19	
29-Jun-19	13-Jul-19	German
13-Jul-19	27-Jul-19	
03-Aug-19	17-Aug-19	German
31-Aug-19	14-Sep-19	
21-Sep-19	05-Oct-19	
26-Oct-19	09-Nov-19	German
16-Nov-19	30-Nov-19	

* **Bold dates** are guaranteed departures, all other dates guaranteed from 4 clients.

* **German:** These tours have a German speaking translator/tour leader


DETAILED TOUR INFORMATION:

Why travel with Sunway Safaris

We understand that there are several options available to you when choosing your African safari. We also know that you want to make the most informed decision about your safari, what you get, what's included and what you see and experience. So these are just a few of the Sunway qualities and facts:

- **Small groups** – by travelling with a maximum of 12 people, you are able to witness Africa and have first-hand contact with this amazing continent and its people without being a negative influence. This has been a key factor in our continued success. Our trips appeal to a wide demographic of traveller. Our clients range in age from 25 to 65+ with the average being 45. The range of travellers gives a variety of perspectives which adds to the experience of each safari.
- **2 Sunway tour guides** – group leaders are the key to any safari. On a Sunway safari you will travel with 2 qualified and registered field guides (Field Guides Association of SA). Two guides as crew, not a guide and a driver, means interesting trips with maximum knowledge and information. Our guides have a passion for Africa, her people and her wildlife, and they love nothing more than sharing their knowledge with you.
- **Guaranteed departures** – departure dates on each itinerary shown as bold are guaranteed departure dates. All other departures operate with a minimum of 4 clients.
- **All inclusive price** – when we travel ourselves, we always feel that if we're in a country we should find and see the best it has to offer. So when planning the Sunway routes we ensure that each trip provides the best inclusions and experiences. For example, if you go to Botswana – you have to visit the national parks in an open 4WD – it is the essence of the Botswana wilderness. If you tour Zambia, then you must visit South Luangwa NP and do a game walk with a local scout. When booking on a Sunway Safari there are no hidden costs. All of the entrance fees are included, and a wide range of activities, and most meals. We have included many highlights in our tours, so that you will see and experience the highlights without having to pay extra when you get there. So when you decide on which safari company to book with, look carefully at what you're actually getting. You may only visit a place once, make sure you get the most out of it.

SUNWAY SAFARIS www.sunway-safaris.com +27(11) 465 4905 marketing@sunway-safaris.com sunway.reservations

- **Safety** – our fleet of vehicles are custom built to ensure comfortable and safe touring. Each is constructed, by an authorised passenger vehicle builder, to the latest safety requirements, with a safety shell, and every seat has a lap belt. This gives you peace of mind when travelling with Sunway Safaris on the often demanding African roads.
- **Responsible travel** - Our commitment to sustainable & responsible tourism is reflected in our low impact travel style where all we take is photographs and all we leave is our footprints. Being an African company we have the grassroots contacts to make a real difference in the lives of the people whose lands we visit. 
On each itinerary in the brochure you'll find this symbol which highlights just one of the sustainable travel initiatives that we support
- **Solo Travellers on Classic Journeys** – Due to the group size and the lodge room allocations, if you are travelling on your own there is a price supplement.
- **Experience** - we have more than 22 years' experience planning tours throughout Southern Africa. As such, our itineraries and routes have been perfected over many years ensuring that your tour will run smoothly. We visit the highlights of Southern Africa, but ensure that you do not follow the well-trodden tourist track. All of us at Sunway Safaris have extensive travel experience in Africa, and throughout the world. Being adventure travellers ourselves, we know how to plan trips that give you a broad experience of the countries that you will visit.
- **Based in Africa** - probably the most important part of a Sunway safari is that we are an African company with offices in South Africa and Botswana. We live in Africa, we travel in Africa and it is our passion for this amazing continent that makes Sunway your best travel option.
- **Age Policy** - On all scheduled tours, we accept children 12-17 with accompanying adult. We have no upper age limit. Clients older than 65 years of age at time of travel require a medical certificate stating client is fit and healthy to join an adventure travel group tour. We have many clients over 65 years of age, who are perfectly capable of enjoying every aspect of a Sunway tour, both accommodated and camping. For more details contact marketing@sunway-safaris.com.

Local Payment

A local payment is not required on this safari.

Recommended reading

Before you travel you might want to read any of the following books. While not specific to the Sunway tour you will join, they do provide some background understanding of the countries you will be visiting.

- Long Walk to Freedom by Nelson Mandela (Autobiography - Nelson Mandela is one of the great moral and political leaders of our time.)
- Sands of Silence by Peter H Capstick (Tales of travels and the Bushmen's culture and their political persecution)
- Skeleton Coast by John H Marsh (Wreck of the Dunedin Star and its survivors)
- The Diamond Hunters by Wilbur Smith (Fictional family feud set in Namibia)
- The Skeleton Coast by Benedict Allen (A journey through the Namib Desert)
- The Smell of Apples by Mark Behr (Story of boy in Cape Town and then army on Caprivi)
- Etosha by Daryl and Sharna Balfour (A coffee table book of photography)
- Newman's Birds of Southern Africa by Kenneth Newman
- Sasol Birds of Southern Africa by Ian Sinclair, Phil Hockey, and W.R. Tarboton
- The Safari Companion: A Guide to Watching African Mammals Including Hoofed Mammals, Carnivores, and Primates by Richard D. Estes and Daniel Otte
- Field Guide to Trees of Southern Africa (Field Guides) by Braam Van Wyk, Keith Coates Palgrav, and Piet Van Wyk

Shopping

- Craft shopping for carvings, batiks, paintings and clothing is best in Victoria Falls which has a wide variety of curios. Botswana has beautiful grass weavings but these are available mostly at curio shops as there are hardly any craft markets in Botswana. Namibia also has unusual and interesting curios and crafts. If you see something you like, it is best to buy it because it is unlikely that you will see something similar further along. Crafts from change from region to region.

Food

- The majority of meals on this safari are provided by the lodges.

Difficulty

- Anyone who is generally active and in good health should enjoy this trip.
- Full itinerary with a couple of long driving days. The road conditions through the wilderness areas a very poor and our progress can at times be slow and dusty. Remember to hold on at all times and enjoy the ride!

SUNWAY SAFARIS www.sunway-safaris.com +27(11) 465 4905 marketing@sunway-safaris.com sunway.reservations

Things you should know

- Includes park entrances, game drives and the Okavango Delta excursion.
- As this tour spends a large amount of time in wildlife areas it is essential that clients adhere to the tour leaders (and local guides) instructions regarding interaction with wildlife, camp safety and game walk/drive rules.
- Your client will need a valid passport and visas for entry into Zimbabwe, Namibia and Botswana.
- Luggage, please pack to a limit of 12kgs in a soft sports tog bag. Also bring daypack for walks and keeping in the vehicle. You do not need to bring a towel as the accommodation establishments will provide towels.
- We recommend that you bring Euro, US\$ or South African Rand for personal expenses on this trip but please note that in Namibia, Euro and US\$ will need to be changed into Namibian \$ or South African Rand as shops, restaurants and market vendors only accept N\$ and ZAR. In Botswana please note that foreign currency will need to be changed into Botswana Pula as shops, restaurants and market vendors only accept BWP. Expenses in Victoria Falls can be paid in US\$ or Euro and major credit cards can also be used for optional activities throughout this tour. See the Sunway tour dossier for approximate costs of drinks and meals etc.

Common questions about this trip

1. **Can I buy camera memory cards?** Memory cards and other photographic accessories will be available several times on tour. A camera with a zoom lens from wide angle to telephoto, 35-300mm, is advisable to capture both scenic and wildlife shots. Each vehicle is fitted with a 12/220V inverter – this can be used while the vehicle is running (but will drain the vehicle battery if left plugged in), so this should only be relied on for limited charging of camera batteries and we recommend you bring a 2nd battery. Remember you can also charge your camera at all the accommodation except Elephant Pools Lodge.
2. **Is it safe?** Zimbabwe has been involved in a political power struggle over the past few years, and this has deterred tourists from travelling to the country. Having said this, the Zimbabwe people are always friendly and helpful to visitors to their country and tourists are welcome with open arms. Botswana and Namibia are safe and your guide knows both countries intimately and will endeavor to show you the best parts while looking after you. In the wild areas your guide will brief you on the necessary precautions, follow this advice and you will be fine. Be aware of your personal belongings and you will have a great trip!
3. **Do I need malaria tablets?** Yes, the trip passes through malaria areas and prophylactics are recommended.
4. **What do I need to bring?** All details are covered in our general tour briefing (available from www.sunway-safaris.com on home page) but the basics are: - comfortable clothes for warm days and cool evenings, walking shoes, flash light, a raincoat, hat and sunglasses, swimsuit, a small pair of binoculars also comes in very handy and most importantly - a sense of adventure!

