

Date of issue: 02May18
For Sunway Safaris agent use only

Tour code: **LM22**

Guaranteed departures

Small group safari maximum: **12 travellers**
Travel through: **Zambia, Malawi, Mozambique & South Africa**

Safari length: **22 days**



2019

MALAWI, ZAMBIA & MOZAMBIQUE "TRADE ROUTE"



DEPARTS:

LIVINGSTONE on Saturday at 14:00pm

ENDS:

JOHANNESBURG on Saturday at 17:00pm

Highlights

- * Victoria Falls – natural wonder of the world
- * Lower Zambezi – canoeing
- * South Luangwa NP – game walk & 4WD game drives
- * Lake Malawi – snorkelling & beaches
- * Benguerra Island – explore islands on a dhow
- * Inhambane – beaches and scuba diving
- * Kruger National Park – game drives



SAFARI GRADE: CAMPING

The Trade Route is an extraordinary journey across South Eastern Africa. Active days canoeing on the Zambezi River and snorkelling in the warm Indian Ocean, game viewing in the world famous Kruger and bush walks in South Luangwa. We recommend Malaria prophylactics. Border crossings can be slow, so you need to be prepared for the experience. This journey has challenges and is for the adventurous traveller but also has magnificent highlights.

LM22 Zambia, Malawi, Mozambique is the full 22 day tour.

The LL12 Zambia & Malawi covers highlights of Zambia, with Lake Malawi, in just 12 days. Ends Lilongwe.

Overnight 16 nights on safari designated campsites, in national parks and towns. Campsites have hot showers. Please note there is 1 night of very basic camping with poor facilities in Tete (there is no alternative). 2 nights guest house twin bed accommodation in Vilankulos with ablutions shared between several rooms. 2 nights casitas in Inhambane, twin bedrooms with en suite facilities. 1 night in the Greater Kruger NP in a lodge with en suite twin bedrooms, allowing you time to tidy up & pack before flying from Jo'burg on day 22.

Meals 21 breakfasts, 19 lunches and 16 dinners will be provided by the Sunway crew, prepared at the vehicle and eaten around the camp fire or in the boma. The last evening meal will be provided by the lodge.

Transport Due to sometimes poor roads we only use Sunway Safari trucks for this tour. Potholes, damaged gravel roads and livestock on the roads can make travel slow, you'll pass through villages and witness the local lifestyle all the way. For the game drives in South Luangwa we use open 4WD.

Limited participation An essential part of your safari is participation. From putting up your tent to packing the truck in the morning – it's all part of your adventure. Your tour leaders will do all the meal preparation but we do ask the clients to help (on rotation) with the washing up. There are some long travel days which means early morning starts so we all need to get involved to make the day run efficiently.

CAMPING ITINERARY

Day 1 - 2 **LIVINGSTONE** [camping Bx1 - -] (B= breakfast, L= lunch, D= dinner)

The group will meet in Livingstone, in Zambia, at 14:00 where we have 2 days to explore Victoria Falls, a natural wonder of the world, plunging into the Zambezi Gorge. Adventure activities abound, white water rafting on the mighty Zambezi, or a 111m bungi jump (own expense).

Day 1: Breakfast is not included

Day 1: Lunch will be an own expense meal

Day 1: Dinner will be an own expense meal at a local restaurant

Day 2: Breakfast provide by the tour leaders with the help of the group

Day 2: Lunch will be an own expense meal

Day 2: Dinner will be an own expense meal at a local restaurant

Includes: Entrance to see the Victoria Falls
Overnight: Campsite – good ablution facilities, hot showers, swimming pool, restaurant & bar
Distance/time: N/A
Optional Activities: White water rafting, sunset cruises, scenic flights & many more



Day 3 **KAFUE RIVER** [camping BLD]

A long drive takes us across the rolling Miombo forested hills of southern Zambia to the Kafue River where we camp the night.

Day 3: Breakfast provided by the tour leaders with the help of the group

Day 3: Lunch provided by the tour leaders with the help of the group

Day 3: Dinner provided by the tour leaders with the help of the group

Includes: -
Overnight: Campsite – good ablution facilities, hot showers, swimming pool & bar
Distance/time: 505 kms, ± 8 hours, excludes stops for sightseeing & lunch



Day 4 - 5 **LOWER ZAMBEZI CANOEING** [camping BLD]

We paddle down the mighty Zambezi River, home of the tribal mythical god – Nyami Nyami. Canoeing past local riverside villages and magnificent scenery. We camp wild on an island in the heart of untamed Africa. The following morning we continue our canoe safari through an area teeming with elephants, hippos and other wildlife. We will be collected by a motorboat, and are transferred back up river to our starting campsite.

Day 4, 5: Breakfast provided by the tour leaders with the help of the group

Day 4, 5: Lunch provided by the tour leaders with the help of the group

Day 4, 5: Dinner provided by the tour leaders with the help of the group

Includes: Full day canoe safari on Lower Zambezi with local river guides

Overnight: Camping – on day 4, we camp wild on an island in the Zambezi River, on day 5, we stay in a designated campsite, with good ablution facilities, with hot showers, swimming pool & bar. You will need to bring your own towel.

Distance/time: 50kms, ± 1½ hours (subject to road conditions), excludes stops for sightseeing & lunch



Day 6 LUSAKA [camping BLD]

We head to Lusaka where we stock up on supplies in the bustling shops and markets of the Zambian capital. Taking the Great East Road we drive this afternoon until sunset.

Day 6: Breakfast provided by the tour leaders with the help of the group

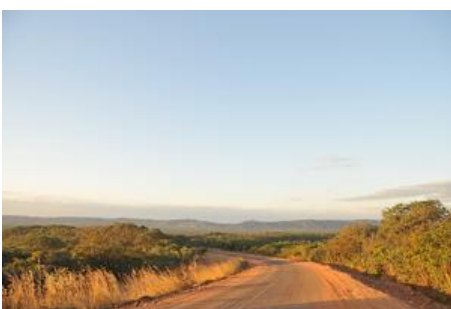
Day 6: Lunch provided by the tour leaders with the help of the group

Day 6: Dinner provided by the tour leaders with the help of the group

Includes: N/A

Overnight: Campsite – good ablution facilities, hot showers, swimming pool & bar

Distance/time: 380kms, ± 6½ hours (subject to road conditions), excludes stops for sightseeing & lunch



Day 7, 8, 9 SOUTH LUANGWA NATIONAL PARK [camping BLD]

Make our way down into “the valley” of the South Luangwa National Park. This remote region is one of Africa’s finest wildlife sanctuaries where hippo, elephants, lion and leopard abound. We camp on the banks of the Luangwa River and explore the area on 2 game walks and 2 open 4WD game drives, one at night with spotlights, to see nocturnal animals. (In the green season, Dec – Apr, walks may not be possible in which case we’ll do extra game drives).

Day 7, 8, 9: Breakfast provided by the tour leaders with the help of the group

Day 7, 8, 9: Lunch provided by the tour leaders with the help of the group

Day 7, 8, 9: Dinner provided by the tour leaders with the help of the group

Includes: Entrance fees to South Luangwa National Park, 2x game walks, 2 game drives

Overnight: Campsite – good ablution facilities, hot showers, swimming pool, restaurant & bar

Distance/time: 500kms, ± 8 hours (subject to road conditions), excludes stops for sightseeing & lunch

Optional Activities: Game walks & game drives



Day 10 - 11 LAKE MALAWI [camping BLD]

SUNWAY SAFARIS www.sunway-safaris.com +27(11) 465 4905 marketing@sunway-safaris.com sunway.reservations

Malawi "the warm heart of Africa". We re-stock with fresh supplies in the markets of Lilongwe before heading to our camp on the beach at Lake Malawi. We'll take a boat out to the islands to explore the fantastic bays and coves in the area.

Day 10, 11: Breakfast provided by the tour leaders with the help of the group

Day 10, 11: Lunch provided by the tour leaders with the help of the group

Day 10, 11: Dinner provided by the tour leaders with the help of the group

Includes: Island boat excursion
Overnight: Campsite – good ablution facilities, & hot showers
Distance/time: 510kms, ± 7 hours (subject to road conditions), excluding border formalities & stops for sightseeing



Livingstone to Lilongwe "Zambia Malawi" tour ends at 14:00pm on day 12 at Lilongwe airport. See www.sunway-safaris.com for itinerary & price (LL12).

Day 12 - 13 TRANSIT MOZAMBIQUE [camping BLD]

Heading south again we enter Mozambique at Zobue border post. Making our way back over the Zambezi we travel through the Tete region, camping en route in this remote part of Mozambique. (Campsite facilities are very basic.)

Day 12, 13: Breakfast provided by the tour leaders with the help of the group

Day 12, 13: Lunch provided by the tour leaders with the help of the group

Day 12, 13: Dinner provided by the tour leaders with the help of the group

Includes: N/A
Overnight: Campsite – very basic ablution facilities, & hot showers (sometimes!),
Distance/time: 800kms ± 6-7 hours per day (subject to road conditions), excludes stops for sightseeing & lunch



Day 14 - 15 BAZARUTO ISLANDS [chalets Bx2 Lx2 Dx1]

Upon reaching the Indian Ocean we stay overnight in Vilankulos. We take a full day to explore the Magaruque Island on a local dhow, a traditional ocean going trade vessel. Beautiful blue sea, snorkeling, expansive white beaches and some excellent seafood available – what a day!

Day 14: Breakfast provided by the tour leaders with the help of the group

Day 14: Lunch provided by the tour leaders with the help of the group

Day 14: Dinner provided by the tour leaders with the help of the group

Day 15: Breakfast provide by the tour leaders with the help of the group

Day 15: Lunch provided by the tour leaders with the help of the group

Day 15: Dinner will be an own expense meal at a local restaurant

Includes: Full day Dhow excursion to Bazaruto Islands
Overnight: Smugglers – for 2 nights in Vilankulos we stay in twin rooms with shared bathrooms.
 Swimming pool, bar, restaurant, telephone.
 Wifi not available



Distance/time: 530kms ± 6 hours (subject to road conditions), excludes stops for sightseeing & lunch
Optional Activities: Snorkeling



Day 16 - 17 **INHAMBANE** [casitas Bx2 Lx2 Dx1]

Arab influences are strong in Inhambane dating back to when slaves, ivory, gold and spices were traded. Explore Inhambane and its 200-year-old cathedral, before moving to our casitas (reed cabin) under the palms next to the beach. Dhow rides and scuba diving on coral reefs are available (own expense).

Day 16: Breakfast provided by the tour leaders with the help of the group

Day 16: Lunch provided by the tour leaders with the help of the group

Day 16: Dinner provided by the tour leaders with the help of the group

Day 17: Breakfast provide by the tour leaders with the help of the group

Day 17: Lunch provided by the tour leaders with the help of the group

Day 17: Dinner will be an own expense meal at a local restaurant

Includes: N/A

Overnight: Palm Grove Resort – for 2 nights in Inhambane (Praia do Tofo / Barra) we stay in reed and thatch casitas. These are basic twin rooms en suite. Bar, restaurant, telephone.
Wifi not available



Distance/time: 330kms, ± 4½ hours, excludes stops for sightseeing & lunch

Optional Activities: Scuba diving, ocean safari & deep sea fishing



Day 18 **BILENE** [camping BL-]

We travel further south along the coast to the town of Bilene situated on the shores of the Uembje lagoon. The lagoon is 8km wide and 27km long with clear water and white, sandy beaches. We spend the afternoon exploring the lagoon with options of kayaking and snorkelling (own expense), and swimming in the shallow, calm waters.

Day 18: Breakfast provided by the tour leaders with the help of the group

Day 18: Lunch provided by the tour leaders with the help of the group

Day 18: Dinner will be an own expense meal at a local restaurant

Includes: N/A

Overnight: Campsite – good ablution facilities, hot showers, swimming pool, restaurant, bar & shop

Distance/time: 375kms, ± 5 hours (sometimes!)

Optional Activities: Kayaking, snorkelling, & other water sports



Day 19 - 20 **KRUGER NATIONAL PARK** [camping BLD]

We travel through the Transfrontier Limpopo Park into Kruger National Park - visit big game country! Exciting game drives to spot lions, giraffe and the mighty elephant. Relaxing in the tranquil bush we experience a land forgotten by time, a true African wilderness.

Day 19, 20: Breakfast provided by the tour leaders with the help of the group

Day 19, 20: Lunch provided by the tour leaders with the help of the group

Day 19, 20: Dinner provided by the tour leaders with the help of the group

- Includes:** Entrance fees to Kruger National Park, morning and afternoon game drives
- Overnight:** Campsite – good ablution facilities, hot showers, swimming pool, restaurant, bar & shop
- Distance/time:** 350kms, ± 7.5 hours excluding border formalities & lunch stop (a long day!)
- Optional Activities:** Night game drive in National Park game viewing vehicles



Day 21 - 22 **GREATER KRUGER – JOHANNESBURG – TOUR ENDS** [lodge Bx2 Lx1 Dx1]

Departing Kruger, we overnight at a private game lodge in the Greater Kruger for our final dinner under the stars. The following morning we tour the Panorama Route, visiting God’s Window and the Three Sisters. We return to Johannesburg in the afternoon of the day 22, sun-tanned, laid-back and ready to rejoin life. Tour ends @ 17:00

Day 21: Breakfast provided by the tour leaders with the help of the group

Day 21: Lunch provided by the tour leaders with the help of the group

Day 21: Dinner will be provided by the lodge

Day 22: Breakfast provided by the lodge

Day 22: Lunch will be an own expense meal

Day 22: NA

- Includes:** Early morning game drive
- Overnight:** Ilkley Safari Lodge – for 1 night we stay in twin share bedrooms ensuite, for a chance to tidy up before flying out on day 22. Swimming pool.
Wifi not available
- Distance/time:** 490kms, 7½ hours excluding stops for sightseeing and lunch on the last day.

Please note: we do a free drop off at Johannesburg airport on day 22 at +/- 16:00pm so you can book your flight out for the last day of tour.

Please note: The distance and travel times quoted above are an estimate only, and subject to local road conditions – remember it’s an adventure!

Special Interest: A walking safari in South Luangwa is an essential Zambian experience. Game scouts will lead us on an exhilarating walk in this big game wilderness



Sustainable Tourism: In the Luangwa Valley we stay at Wildlife Camp who donate 60% of their revenues to the Wildlife and Environmental Conservation Society of Zambia. A local guide will lead us on a game walk and night drive. Your visit will support employment opportunities.

2019 PRICES AND DEPARTURE DATES:

RACK Price: (valid Jan 2019 – Dec 2019)

€ 2 390 pps + local payment of US\$ 400

Single supplement: € 310 pp (If you are travelling on your own, Sunway will "room" you with another same gender client. You do not pay extra when booking as a single person. If however you request a single, then you'll pay the single supplement and have a single tent and, on accommodated nights, a single room.)

2019 DEPARTURE DATES

LM22 Trade Route

Departs	Ends
LIVINGSTONE	JOHANNESBURG
Saturday at	Saturday at
14:00 pm	17:00 pm

BTg	23-Mar-19	13-Apr-19	German
BT	13-Apr-19	04-May-19	
BT	04-May-19	25-May-19	
BT	01-Jun-19	22-Jun-19	
BTg	22-Jun-19	13-Jul-19	German
BT	29-Jun-19	20-Jul-19	
BTg	13-Jul-19	03-Aug-19	German
BT	27-Jul-19	17-Aug-19	
BT	10-Aug-19	31-Aug-19	
BT	24-Aug-19	14-Sep-19	
BT	07-Sep-19	28-Sep-19	
BTg	21-Sep-19	12-Oct-19	German
BT	05-Oct-19	26-Oct-19	
BTg	19-Oct-19	09-Nov-19	German
BT	02-Nov-19	23-Nov-19	
BT	16-Nov-19	07-Dec-19	
BT	30-Nov-19	21-Dec-19	

LL12 Livingstone to Lilongwe

Departs	Ends
LIVINGSTONE	LILONGWE
Saturday at	Wednesday at
14:00 pm	14:00 pm

BTg	23-Mar-19	03-Apr-19	German
BT	13-Apr-19	24-Apr-19	
BT	04-May-19	15-May-19	
BT	01-Jun-19	12-Jun-19	
BTg	22-Jun-19	03-Jul-19	German
BT	29-Jun-19	10-Jul-19	
BTg	13-Jul-19	24-Jul-19	German
BT	27-Jul-19	07-Aug-19	
BT	10-Aug-19	21-Aug-19	
BT	24-Aug-19	04-Sep-19	
BT	07-Sep-19	18-Sep-19	
BTg	21-Sep-19	02-Oct-19	German
BT	05-Oct-19	16-Oct-19	
BTg	19-Oct-19	30-Oct-19	German
BT	02-Nov-19	13-Nov-19	
BT	16-Nov-19	27-Nov-19	
BT	30-Nov-19	11-Dec-19	



* **Bold dates** are guaranteed departures, all other dates guaranteed from 4 clients.

* **German / g:** These tours have a German speaking translator/tour leader

* **BT:** The Zambia, Malawi & Mozambique Trade Route" can be combined after the "Botswana Wildside" safari to create a complete tour of Southern Africa.

LM22 Livingstone to Johannesburg

€ 2 390 pps + local payment of \$400

Single supplement: € 310 pp

LL12 Livingstone to Lilongwe

€ 1 940 pps + local payment of \$300

Single supplement: € 95 pp


DETAILED TOUR INFORMATION:

In a nutshell

- A diverse African adventure – discovery route.
- All inclusive trip with cultural experience, adventure and wildlife through Zambia, Malawi, Mozambique and South Africa!
- Vic Falls, Lower Zambezi canoeing, Lake Malawi, Benguerra Island, Kruger National Park – great diversity!

Why travel with Sunway Safaris

We understand that there are several options available to you when choosing your African safari. We also know that you want to make the most informed decision about your safari, what you get, what's included and what you see and experience. So these are just a few of the Sunway qualities and facts:

- **Small groups** – by travelling with a maximum of 12 people, you are able to witness Africa and have first-hand contact with this amazing continent and its people without being a negative influence. This has been a key factor in our continued success. Our trips appeal to a wide demographic of traveller. Our clients range in age from 25 to 65+ with the average being 45. The range of travellers gives a variety of perspectives which adds to the experience of each safari.
- **2 Sunway tour guides** – group leaders are the key to any safari. On a Sunway safari you will travel with 2 qualified and registered field guides (Field Guides Association of SA). Two guides as crew, not a guide and a driver, means interesting trips with maximum knowledge and information. Our guides have a passion for Africa, her people and her wildlife, and they love nothing more than sharing their knowledge with you.
- **Guaranteed departures** – departure dates on each itinerary shown as bold are guaranteed departure dates. All other departures operate with a minimum of 4 clients.
- **All inclusive price** – when we travel ourselves, we always feel that if we're in a country we should find and see the best it has to offer. So when planning the Sunway routes we ensure that each trip provides the best inclusions and experiences. For example, if you go to Botswana – you have to visit the national parks in an open 4WD – it is the essence of the Botswana wilderness. If you tour Zambia, then you must visit South Luangwa NP and do a game walk with a local scout. When booking on a Sunway Safari there are no hidden costs. All of the entrance fees are included, and a wide range of activities, and most meals. We have included many highlights in our tours, so that you will see and experience the highlights without having to pay extra when you get there. So when you decide on which safari company to book with, look carefully at what you're actually getting. You may only visit a place once, make sure you get the most out of it.
- **Safety** – our fleet of vehicles are custom built to ensure comfortable and safe touring. Each is constructed, by an authorised passenger vehicle builder, to the latest safety requirements, with a safety shell, and every seat has a lap belt. This gives you peace of mind when travelling with Sunway Safaris on the often demanding African roads.
- **Responsible travel** - Our commitment to sustainable & responsible tourism is reflected in our low impact travel style where all we take is photographs and all we leave is our footprints. Being an African company we have the grassroots contacts to make a real difference in the lives of the people whose lands we visit. 
On each itinerary in the brochure you'll find this symbol which highlights just one of the sustainable travel initiatives that we support
- **Solo Travellers** – going it alone won't make your holiday more expensive; our reservations staff will match you up with another same-gender traveller to keep your holiday affordable. If however you request a single room or tent these are available, with a price supplement
- **Experience** - we have more than 20 years' experience planning tours throughout Southern Africa. As such, our itineraries and routes have been perfected over many years ensuring that your tour will run smoothly. We visit the highlights of Southern Africa, but ensure that you do not follow the well-trodden tourist track. All of us at Sunway Safaris have extensive travel experience in Africa, and throughout the world. Being adventure travellers ourselves, we know how to plan trips that give you a broad experience of the countries that you will visit.
- **Based in Africa** - probably the most important part of a Sunway safari is that we are an African company with offices in South Africa and Botswana. We live in Africa, we travel in Africa and it is our passion for this amazing continent that makes Sunway your best travel option.
- **Age Policy** - On all scheduled tours, we accept children 12-17 with accompanying adult. We have no upper age limit. Clients older than 65 years of age at time of travel require a medical certificate stating client is fit

and healthy to join an adventure travel group tour. We have many clients over 65 years of age, who are perfectly capable of enjoying every aspect of a Sunway tour, both accommodated and camping. For more details contact marketing@sunway-safaris.com.

Accommodation

- **Camping** – 15 nights on safari we stay at designated campsites in national parks, on private land and in towns. Campsite facilities are at best basic but generally clean. There are hot, but sometimes only cold, showers, washing facilities at some of the campsites. Some camps in Zambia have simple reed enclosures for showers but do have flush toilets!
- **Wild camping** - for 1 night while canoeing on the Zambezi River we camp wild on an island in the middle of the river. Wild camps have no facilities; we will need to take our own water and all equipment. Wild camping can be very enjoyable but please remember that we leave no trace of our stay and take all rubbish away with us. Toilets will be of the "dig and bury" variety.
Sunway supplies all the camping equipment with the exception of your sleeping bag and pillow. The dome tents we use are 2.2 x 2.2 x 1.8 metres and putting them up or down takes only 5 minutes. Tents have built-in insect nets. We supply mattresses, which are about 5 cm thick, warm and comfortable. The camp chairs have a backrest.

Please note:

That the accommodation specified above and in the itinerary, is a guide only and is subject to availability. Alternatives will be of a similar standard, and accommodation changes will be made without notice.

Local Payment

- A local payment is required on this safari and this will be collected by your tour leader on departure. The local payment forms part of your overall tour cost, and must be taken into consideration when booking your safari. It will be used by your tour leaders to pay for some of the operational costs incurred on safari.

Sunway prepays by bank transfer, as many of the tour costs as possible. However, in many cases, a cash payment is the only option: certain of the destinations that we visit, only accept cash. For example entry fees to most national parks, some of the campsites and also local food markets (and even some shops) are only payable in cash. In addition, each Sunway vehicle has a garage card but these are only accepted in South Africa and parts of Namibia, therefore in all other countries, fuel must be paid for in cash. Due to the remoteness of some departure points, having a local payment system enables us to manage tour funds effectively. The efficiency of this system helps keep the overall tour prices down.

For these reasons, it is necessary for Sunway to charge a local payment. It also ensures that a portion of the tour costs goes directly into the country you are visiting, thereby benefiting local communities and contributing to the conservation of the areas we visit. This is all part of Sunway Safaris' ongoing effort to operate sustainable safaris that make a real difference.

Recommended Reading

Before you travel you might want to read any of the following books. While not specific to the Sunway tour you will join, they do provide some background understanding of the countries you will be visiting.

- Africa House by Christina Lamb (Story of Stewart Gore who built an English country mansion in Zambia)
- Exploring Victoria Falls by Prof Lee R Berger and Brett Hilton by Barbe
- David Livingstone, The Truth Behind The Legend by Rob Mackenzie
- Personal Life of David Livingstone by William Blaikie
- Long Walk to Freedom by Nelson Mandela (Autobiography - Nelson Mandela is one of the great moral and political leaders of our time.)
- Cry the Beloved Country by Alan Paton (Is the deeply moving story of the Zulu pastor Stephen Kumalo and his son Absalom. A classic work of love and hope, courage and endurance, born of the dignity of man.)
- The Power of One by Bryce Courtenay (Story of one young man's search for the love that binds friends, the passion that binds lovers, and the realization that it takes only one to change the world.)
- The Covenant by James A. Mitchener (The best and worst of two continents carve an empire out of the vast wilderness that is to become South Africa.)
- My Traitor's Heart by Rian Malan (Malan, former South African crime reporter, searches for the truth behind apartheid.)
- When The Lion Feeds by Smith Wilbur (Fictional story set in Natal, South Africa in the 1870's)
- Jock of the Bushveld by J Percy FitzPatrick (Story of a trader and his dog set in 1880 around Pilgrim's Rest and Kruger area)
- Newman's Birds of Southern Africa by Kenneth Newman
- Sasol Birds of Southern Africa by Ian Sinclair, Phil Hockey, and W.R. Tarboton

- The Safari Companion: A Guide to Watching African Mammals Including Hoofed Mammals, Carnivores, and Primates by Richard D. Estes and Daniel Otte
- Field Guide to Trees of Southern Africa (Field Guides) by Braam Van Wyk, Keith Coates Palgrav, and Piet Van Wyk

Shopping

- Craft shopping for curios en route is diverse and rewarding. Remember - if you see something you like, it is best to buy it because it is unlikely that you will see something similar further along.

Food

- We pride ourselves on giving very good healthy meals to our clients and will provide three meals per day, except where shown in itinerary, where we try out local restaurants or fresh produce markets.
- The tour leaders do the shopping and meal planning for each group. He/she will always try to obtain fresh produce wherever possible. A rough idea of what these will consist of is: Breakfast - cereals or coffee and toast or the occasional fried breakfast, Lunch - cheese, cold meats, salads on bread or rolls, Dinner - braais (local barbecue), potjies (stews), stir fries etc. We use regular plates, cups and cutlery. All cooking and eating utensils will also be provided.
- We do cater for special dietary requirements (e.g. vegetarian or allergies.)
- We will supply fruit squash served with breakfast and tea or coffee served with breakfast and dinner. All other beverages will be for your own expense. We will not supply bottled drinking water although it is available at many shops on tour.

Difficulty

- Anyone who is generally active and in good health should enjoy this trip. Simple campsites are enjoyed by the outdoor enthusiast, you will get dusty on occasion; but this is Africa!
- This is a long distance trans Africa safari - there is a lot of distance to be covered and so there will be some long travelling days. Due to local conditions, border crossings, road detours and weather, the trip may alter route / schedule - please remember that this continent has its own time scale and things work differently here. Keep an open mind and a sense of humour - it's all part of the adventure!
- Everyone is asked to help out with the running of camp on tour. In other words if everyone spends a little time setting up camp, preparing meals and cleaning up then the tour will run smoothly and everyone will have a good time. Participation is the name of the game.

Things you should know

- Includes all National Park entrance fees, canoeing in the Lower Zambezi River and a trip out to Magaruque Island in the warm Indian Ocean. You will need to bring your own towel.
- You will need a valid passport and visas for entry into Zambia, Malawi, Mozambique and South Africa. Please note that these can be arranged in advance and cannot always be obtained at the border. (Please check visa requirements with your travel agent). At the time of this update, a Mozambique visa is available at the border.
- Forex bureau's are available in Livingstone, Lilongwe, Blantyre & Vilanculos. However we recommend that you bring small denomination Euro or US\$ cash notes for personal expenses on this trip. In some cases you'll be able to pay local service providers in forex, and in some cases you'll need to change into the local currency (Zambian Kwacha, Malawian Kwacha, Mozambique Meticals and South African Rand). Zambia requires that all services are paid in local currency, however major credit cards (Mastercard / Visa) can also be used for optional activities in Livingstone and elsewhere on tour. See the Sunway tour dossier for approximate costs of drinks and meals etc.

Common questions about this trip

1. **Can I buy camera memory cards?** Memory cards and other photographic accessories will be available several times on tour. A camera with a zoom lens from wide angle to telephoto, 35-300mm, is advisable to capture both scenic and wildlife shots. Each vehicle is fitted with a 12/24V cigarette lighter – this should not be relied on for charging camera batteries and we recommend you bring a 2nd battery. Remember you can also charge your camera on those nights we use accommodation (SA 220V)
2. **Is it safe?** Africa and on the route we follow is relatively safe and your guide knows the countries intimately and will endeavour to show you the best parts while looking after you. We do *not* enter Zimbabwe on this trip. In the cities keep a careful eye on your belongings and don't leave anything lying about - petty theft is rife. In the wild areas your guide will brief you on the necessary precautions, follow this advice and you will be fine. Be aware of your personal belongings and you will have a great trip!
3. **Do I need malaria tablets?** Yes, the trip passes through malaria areas and prophylactics are recommended.
4. **What do I need to bring?** All details are covered in our general tour briefing (available from www.sunway-safaris.com on home page) but the basics are: - a warm sleeping bag, comfortable clothes for warm days and cool evenings, walking shoes, a raincoat, hat and sunglasses, swimsuit, a small pair of binoculars also comes in very handy and most importantly - a sense of adventure!

